

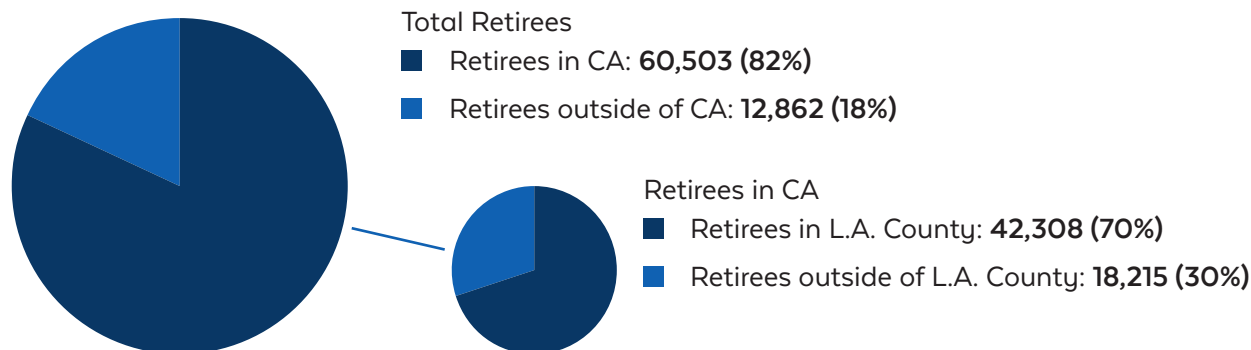


LACERA RETIREES' POSITIVE FINANCIAL IMPACT

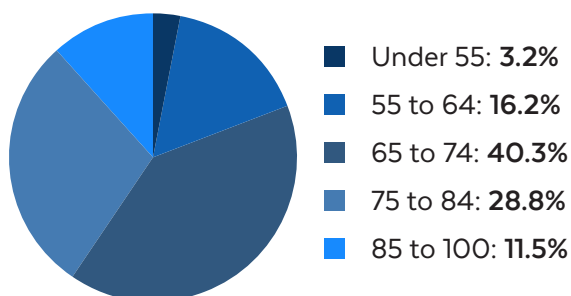
LACERA members contribute to the health and vitality of our communities, both while working and after retirement. Most of our members stay in California after retirement, generating substantial statewide economic activity and tax revenue and supporting various business sectors and thousands of jobs.

Most LACERA Retirees Reside in California

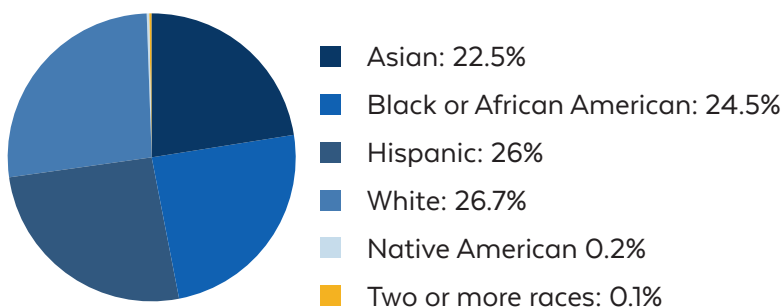
Total Retirees: **73,385**



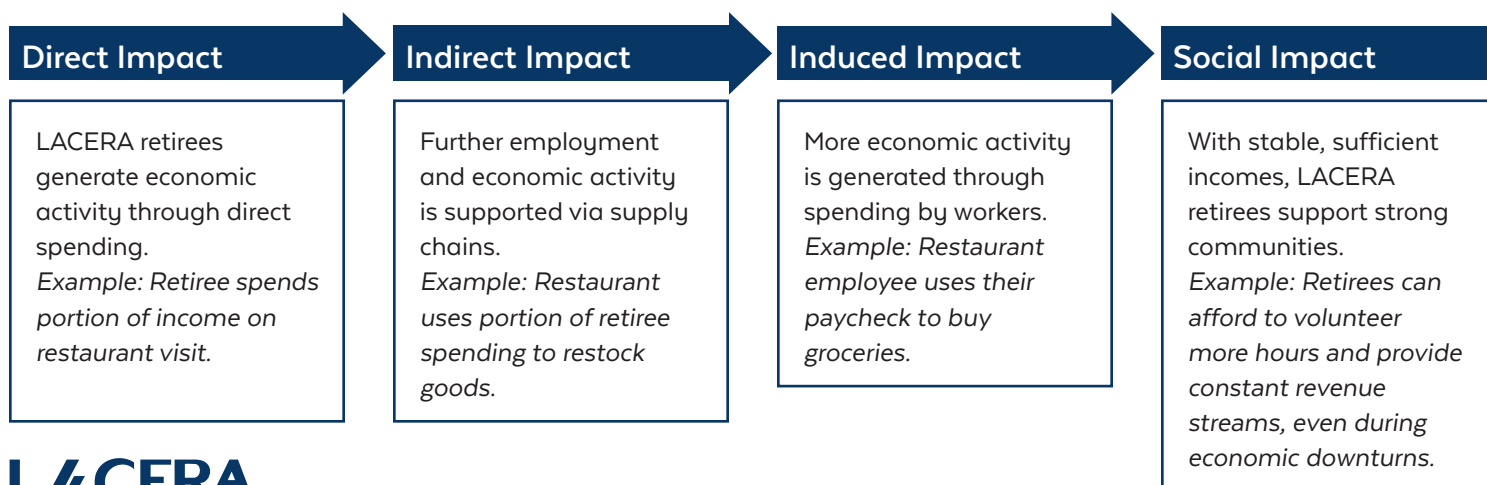
Retirees by Age Group



Ethnicity Summary of LACERA Retirees

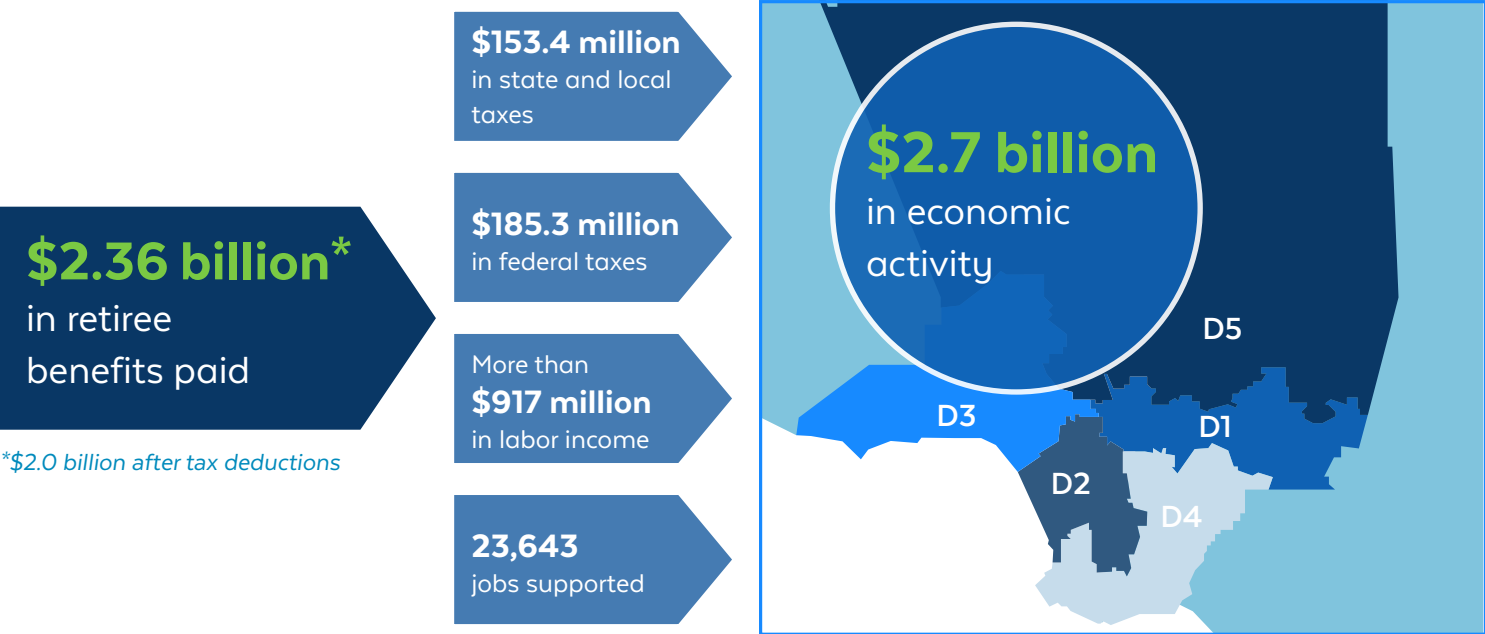


The Far-Reaching Economic Impacts of Retiree Spending

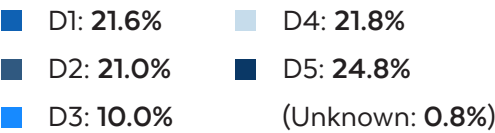


Retiree Spending Adds Billions to the Economy

L.A. County



L.A. County Retirees by District



Statewide

